



WELLVALVE

WVH1.12X

THREADED BALL CHECK VALVE

PRODUCTION STANDARDS:

Designed according to EN 1074-3 and pressure tested to EN 12266-1

A minimum back pressure of 0,3 bar is required to ensure leak tightness

Ideally suited to be used particularly on the suction and discharge sides of pumps installed in lines containing high viscosity media, slurries.

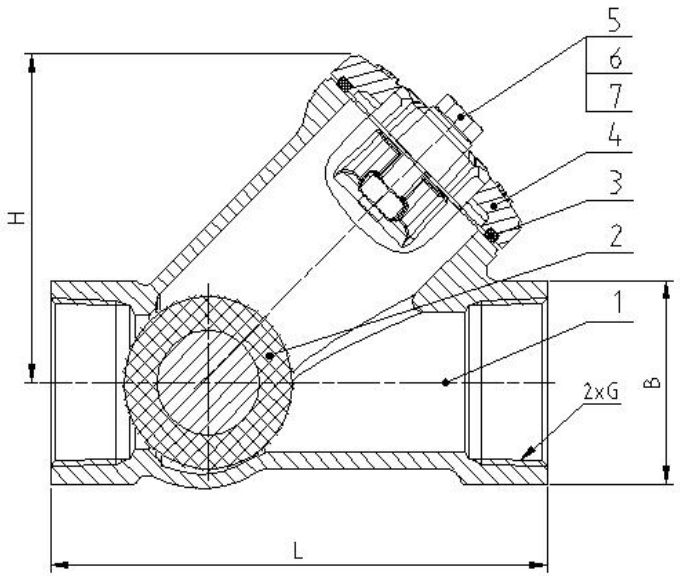
WORKING CONDITIONS

Maximum working pressure : 16 bar.

Maximum temperature : -10°C ~ +80°C.



ITEM	PART NAME	MATERIAL
1	BODY	DUCTILE IRON/GGG50
2	BALL	STEEL+EPDM
3	BONNET GASKET	NBR
4	BONNET	DUCTILE IRON/GGG50
5/6/7	BOLTING/ GASKET/NUT	STAINLESS STEEL / A2-70



Structure			
DN	L	B	H
25	135	52	74
32	135	52	74
40	145	58	94
50	175	71	115
65	200	90	130
80	245	100	150